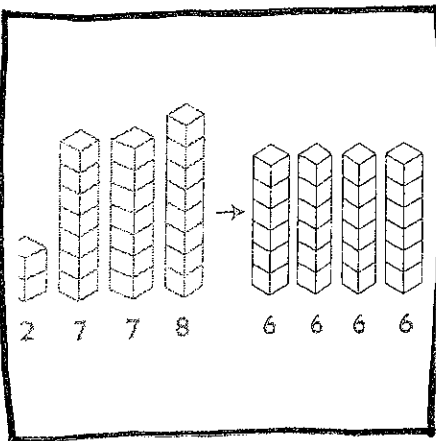


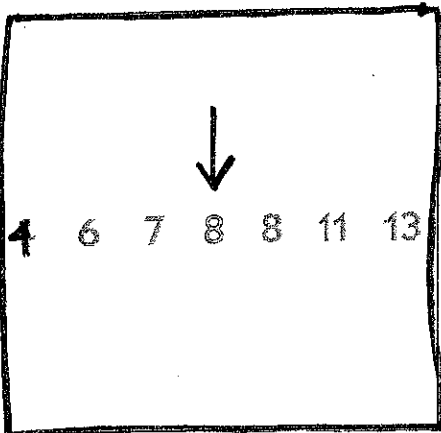
Data Analysis & Probability



mean (The Average)

Add all the numbers and divide the sum by the amount of numbers.

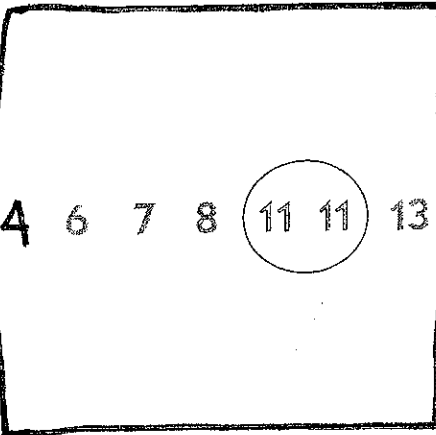
$$2 + 7 + 7 + 8 = 24 \quad 24 \div 4 = 6$$



median (Middle)

When ordering all the numbers from least to greatest, the number that is in the middle.

Another example: 2 3 4 8

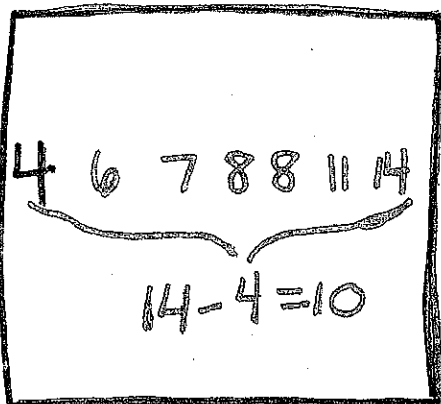


mode (Most)

The number that reoccurs most.

Another example: 4 8 11 8 2 4 8 4

$$\text{Mode} = 4 \text{ \& } 8$$



range

Subtract the smallest number from the largest number.