

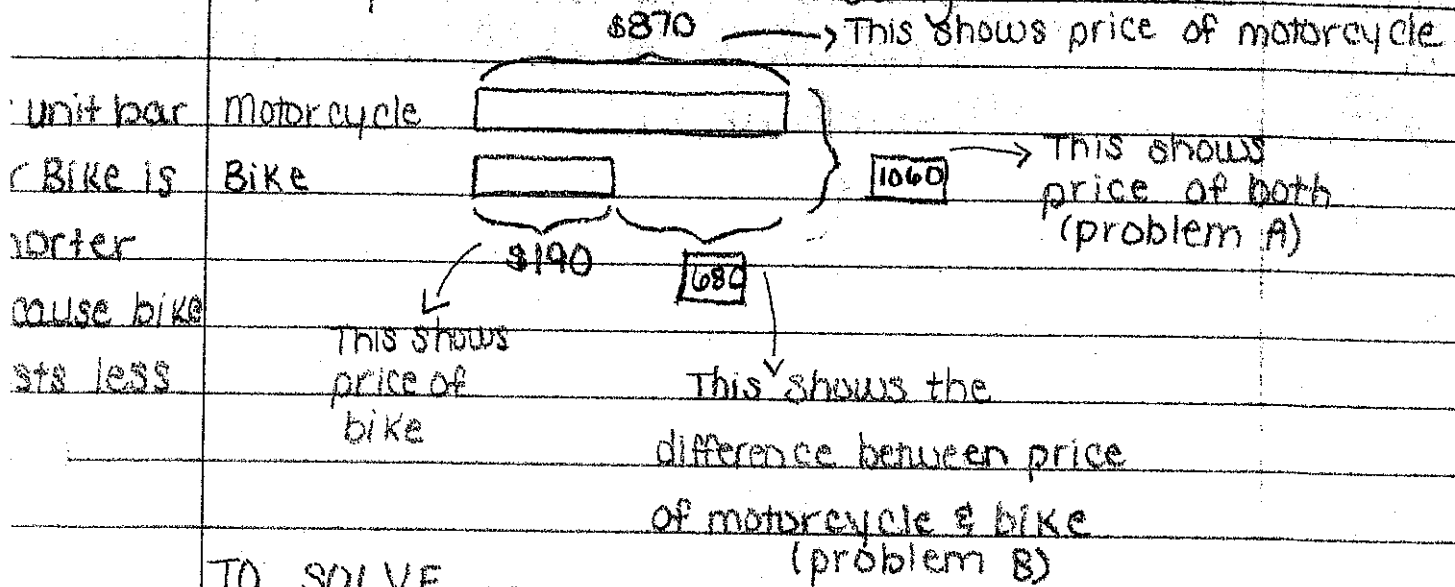
Example similar to problem 4.

4. Sumin paid \$ 870 for a motorcycle and \$ 190 for a bike.

A) How much did he spend?

B) How much cheaper was the bike?

\* Draw pictorial model first using unit bars.



TO SOLVE...

A) \$870 (price of motor.) plus \$190 (price of bike)

870

\* Don't use "I have, I owe" because

+190

not subtraction

900

→ 870 has 8 hundreds which is 800. 190 has

+160

1 hundred which is 100.  $800+100=900$

1060

→ 870 has 7 tens which is 70. 190 has 9 tens

which is 90.  $70+90=160$

B) \$870 (price of motorcycle) minus \$190 (price of bike)

FLIP OVER

