

Next Steps Committee

Final Recommendations for 2024-25 Transition

Board of Education Meeting

January 2023

Focus & Charge of Next Steps Committee

Focus:

Construction of the New Orchard Farm High School is underway. The Next Steps Committee will focus on K-8 District facility planning.

Charge of the Committee:

- Review enrollment trends and projections
- Develop recommendations to accommodate future increases in student enrollment
- Review status of current school configurations and make recommendations on most effective future use
- Develop recommendations regarding future facility needs
- Formal and final plan approval will be the responsibility of the Board of Education

BIG THANK YOU to our Committee Members!

The Next Steps committee is comprised of 34 members; made up of 3 Board members, the Superintendent and the remaining 30 members will be 50% parents and 50% district staff.

School Board

- Steve Stopke, Member
- Brad Westerfeld, Treasurer
- Eric Williams, Member

Superintendent

- Dr. Wade Steinhoff

District Staff

- Dr. Keith Klostermann, Asst. Superintendent
- Dr. Melissa Daniel, Director of Student Services
- Duane Stuermann, Director of Operations

Orchard Farm Elementary

- Dr. Jerry Oetting, Principal
- Kristine Dunkmann, Counselor
- Katie Land, Teacher (5th)
- Autumn Olendorf, Teacher (1st)

Discovery Elementary

- Dr. Luke Dix, Principal
- Melissa Greer, Teacher (4th)
- Matt King, Librarian
- Donna Massman, Teacher (1st)

Orchard Middle School

- Dr. Michelle Geringer, Principal
- Jodi Boschert, Teacher (6th)
- Jacquelyn Bruno, Teacher (6th)
- Camille Frost, Teacher (Electives)

Parents

- Desiree Bagot
- Julie Benanti
- Jenna Boyer
- James Cook
- Marisa Farrar
- Jan Herter
- Jonathon Lee
- Myshell Lester
- Joanne Menke
- Melissa Pingel
- Jeremy Reidelberger
- Dan Rosenberg
- Chuck Rowles
- Andy Schomaker
- (unavailable)

Key Dates

November 2021	Next Steps Committee approved by the Board of Education
February 2022 Meeting # 1	The Committee will meet to review current enrollment trends and projections, review current and projected capacity at each school building, and set goals for our future planning.
April 2022 Meeting # 2	The Committee will reconvene to begin future planning discussions.
October 2022 Meeting # 3	The Committee will review new school year enrollment, continue future planning discussions, and begin developing Committee recommendation.
January 2023	The Next Steps Committee will complete their recommendation. This recommendation will be shared with the Board of Education at the January Board of Education Meeting for consideration.

Next Steps Committee Feedback--Goals and Priorities

- Maintain a **student-centered focus**
- Maintain a strong **sense of community** as we continue to **grow**
- Always have an eye on the **future**
- Prioritize providing **opportunities for kids**
- Recognize that a **strong and supportive school community** is a key factor in the district's success
- **Recognize and value traditions** that have led the district to being well-respected and created a sense of pride for alumni
- Prioritize a **positive school environment**, developed by **dedicated and caring staff members**
- Value **stakeholder collaboration**

Building Names

- Discovery Elementary (K-4)
- Orchard Farm Elementary (K-4)
- Orchard Farm Middle School (5-6)
- Orchard Farm Junior High School (7-8)
- Orchard Farm High School (9-12)

School Day

Secondary (MS, JH, HS) **7:35-2:22**

Elementary (DES, OFEL) 8:55-3:42

*Note: Currently secondary is 7:45-2:32. Moved up 10 minutes to provide additional time for transportation between secondary and elementary routes. *This change begins in the 2023-24 school year.*

Comparison School Times	
High Schools	Start Time
Fort Zumwalt	7:25
Francis Howell	7:20
St. Charles	7:20
Wentzville	7:20
Middle Schools	Start Time
Fort Zumwalt	7:20 (or 8:15)
Francis Howell	7:20 (or 8:15)
St. Charles	7:20 (or 8:05)
Wentzville	7:35

Many current 'traditions' continue

We will continue...

- Kindergarten Celebration
- Government Field Trip (3rd grade)
- START/DARE Graduation (5th grade)
- 5th Grade Camp
- 8th Grade Promotion
- High School Graduation

Decisions that are TBD

Decisions to be made at a later date at the building level, by the staff and administration in the building.

- School-wide programming (ie. Leader in Me, PBIS, Zones of Regulation, ISS/SIP)
- Field Trips, Class Parties, Fundraisers
- School Expectations to locker use, passing from class to class, cell phones, etc.
- Clubs and activities to be offered. While MSHSAA sports will remain the same (7th-8th grade), the clubs and activities to be offered will be determined by the building staff.
 - DES TV/KidsCast?

Office Staffing

Current Office Staffing			
	Administrator	Counselor	Admin Assistants
DES	(2) Principal Asst Principal	(1.5) Full Counselor Shared Counselor	(2)
OFE	(2) Principal Asst Principal	(1.5) Full Counselor Shared Counselor	(2)
MS	(2) Principal Asst Principal	(1.5) Full Counselor Shared Counselor	(3)
HS	(2) Principal Asst Principal	(2.5) Two Full Counselors Shared Counselor	(3)
		(1) District Social Worker	
TOTAL	(8) Total	(8) Total	(10)

2024-25 Office Staffing			
	Administrator	Counselor	Admin Assistants
DES	(2) Principal Asst Principal	(1.5) Full Counselor Shared Counselor	(2)
OFE	(2) Principal Asst Principal	(1.5) Full Counselor Shared Counselor	(2)
MS	(1) Principal	(1) Full Counselor	(2)
JH	(1) Principal	(1) Full Counselor	(2)
HS	(2) Principal Asst Principal	(3) Full Counselors	(3)
		(1) District Social Worker	
TOTAL	(8) Total	(9) Total (+1)	(11) Total (+1)
	*additional MS/JH support under review		

Financial Considerations

While there will be some one time expenditures for supplies, the fiscal impact really requires a focus on Staffing..... (Salaries/Benefits) account for the largest portion of any school's budget. Goal will be to produce a balanced budget in our related funds (Fund 1 & 2).

(FY 25) 2024-25 SCHOOL YEAR: STAFFING SUMMARY ****ANTICIPATED**

Admin = 0 (additional support at MS/JH is under review)

- Maintain BP & AP at each elem. Maintain BP & AP at HS.
- The BP & AP at MS become BP at MS and BP at JH (Additional support is under review)

Admin Assts = +1

- Maintain (2) at each elem. Maintain (3) at HS.
- Plus 1 FTE. The (3) at the MS become (2) at MS and (2) at JH

Guidance = +1

- Maintain the 1.5 at each elem.
- Plus 1 FTE. The (2.5) at the HS become (3) and the (1.5) at the MS become (1) at the MS and (1) at the JH

Teachers = +3-5

- Plus 1 FTE. An additional PE teacher will be added and will be (0.5) at the MS and (0.5) at the JH
- Plus 1 FTE. The 6th grade will need (2) additional core teachers; serving as (1) Social Studies and (1) Science at the MS. This is only a net gain of 1 FTE. We have an additional FTE at 5th grade that creates a transfer opportunity
- Plus 1 FTE. The (0.5) Band and (0.5) Music at the HS become (1) Band and (1) Music/Performance Arts at the HS
- ??? Plus 1 FTE. A new course added to the HS
- ??? Librarian split between MS & JH ???

Separate, but related topic. These are not specific to the 2024-25 Plans for K-8

Maintenance = +1

- Plus 1 FTE. An maintenance team member added for expanded campus

Custodial = +4-5

- Plus 4-5 FTE. The additional school building will require (4-5) additional custodians.

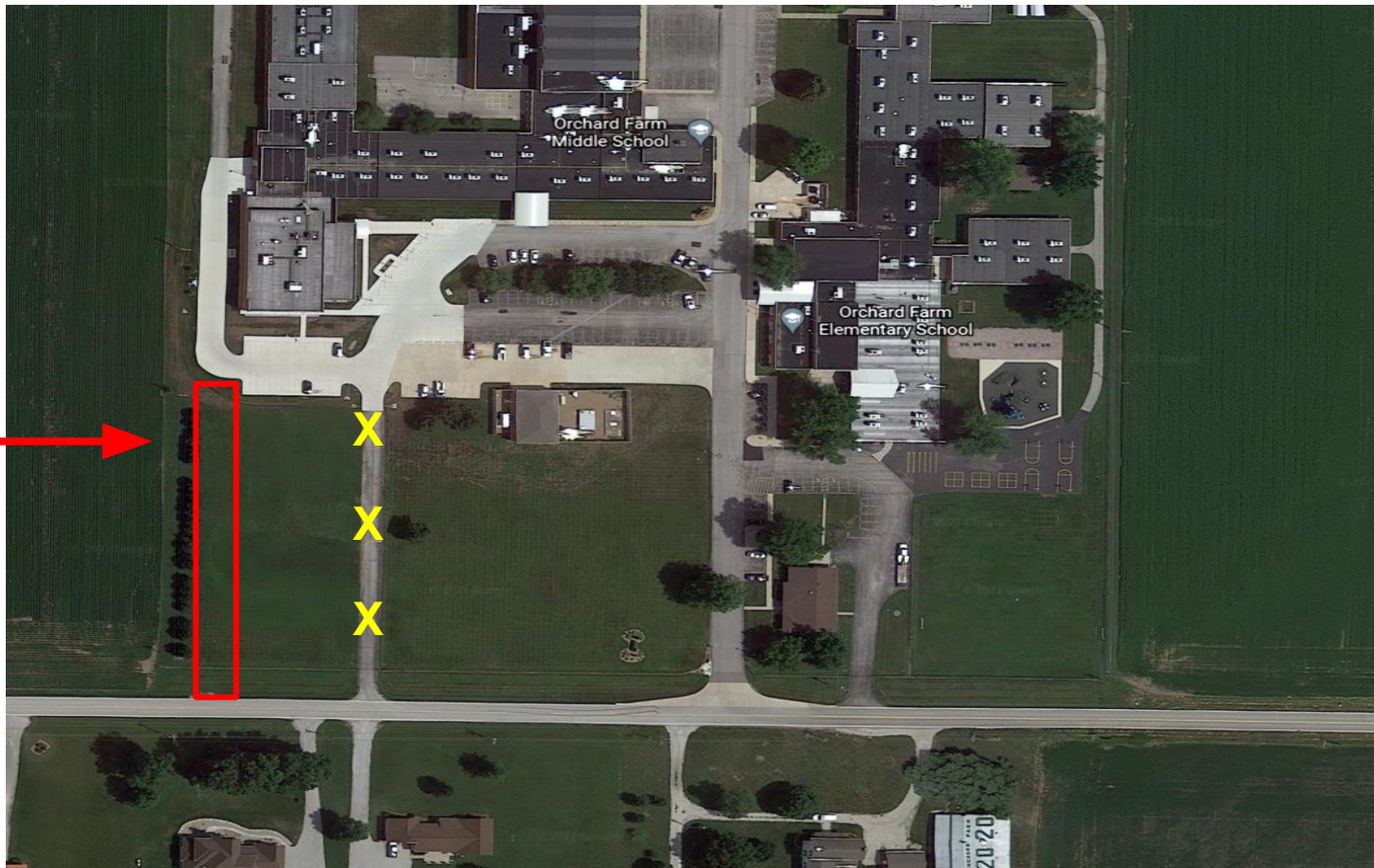
Operational Updates

(Dr. Klostermann and Mr. Stuermann)

Transportation (Dr. Klostermann)

- We will maintain two levels of transportation
 - Secondary Run (5-12)
 - Elementary Run (K-4)
 - *Discovery Zone supports elementary schedule (Beginning in 2024-25, that is K-4)*
- New High School will implement a Non-Bus Zone in the area near the new high school.
- Secondary start and dismissal moved forward 10 minutes to provide additional time between the secondary and elementary bus runs. (*This is a needed recommendation regardless of the New High School addition).
- Additional details to be worked out. Most specifically, secondary transportation routes for far North and far South ends of the district.

Future
Drive



Arrival & Dismissal

Priorities

- Safety
- Traffic Flow
- Staying on Time (bus schedules)

Morning Arrival

Middle School and Junior High



Morning Arrival

Elementary School



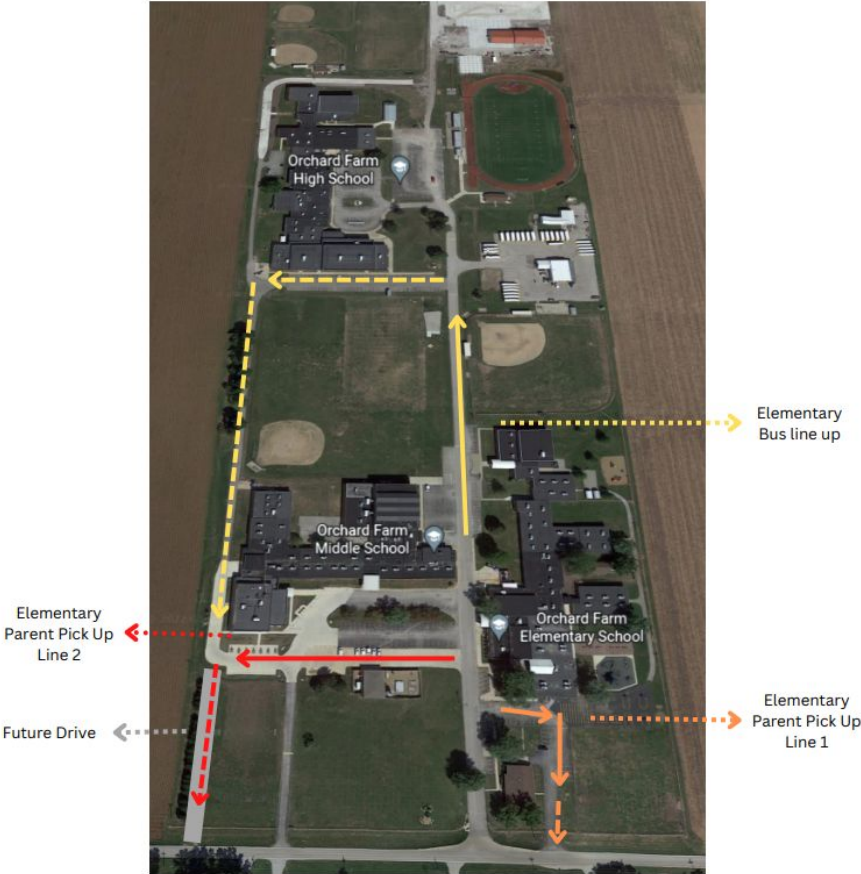
Afternoon Dismissal

Middle School and Junior High



Afternoon Dismissal

Elementary School



Other Capital Needs

The school buildings are in great shape and meet the needs of the students and staff. At this time there are no major renovations planned.

Academic Plans

(Dr. Geringer & Dr. Genenbacher)

Basic Schedule Structure

5th GRADE: (4) 2-Teacher Teams

- Math/Science teacher partnered with an ELA/Social Studies teacher

6th GRADE: (2) 4-Teacher Teams

- Math teacher
- Science teacher
- ELA teacher
- Social Studies teacher

Graduated Progression - Core Content Areas

Elementary School	
K - 4th Grade	(1) Classroom Teacher for Math, Science, Social Studies, ELA
Middle School	
5th Grade	(2) Teachers. One for Math/Science and One for Social Studies/ELA
6th Grade	(4) Teachers. One for each of Math, Science, Social Studies, ELA
Junior High School	
7th & 8th Grade	(5) Teachers on the CORE Team. Math, Science, Social Studies, ELA, PE
High School	
9th - 12th Grade	(8) Teachers over course of A/B Day Schedule

EXPLO Course Offerings- 5th/6th

Innovations
Art
Music
FACS
GTT
Spanish Culture (5th) & Intro to Spanish (6th)
Library/Counselor
Band
PE

EXPLO Course Offerings- 7th/8th

Innovations
Art
Music
FACS
GTT
Spanish 1-A/ 1-B
Band
Health

5th/6th Grade Schedule

Sample Student Schedule	
5th Grade	6th Grade
Homeroom Core Instruction	EXPLO Class (A/B Day)
EXPLO Class (A/B Day)	Math
Core Instruction Math/Science ELA/Social Studies	ELA
	Science
	Social Studies

7th/8th Grade Schedule

Sample Student Schedule	
7th	8th
Core Instruction	Core Instruction
Core Instruction	Core Instruction
Core Instruction	Core Instruction
EXPLO	Core Instruction
Core Instruction	EXPLO

Staffing Assignments

- ✔ Meetings were held with Teacher Leadership Group (CTA)
- ✔ Academic schedule reviewed with 'impacted' teachers.
- ✔ Staff feedback on schedule. Individual and group meetings were held.
- ✔ Staff input was incorporated into academic schedule as revisions were made.
- ✔ Staff preferences were collected to be used as teachers are placed in future assignments.

****Following Board approval, the staffing assignment process will begin.**

Preparing for a successful transition...

- ✓ 33 months prior.....Board of Education approves creation of the Next Steps Committee (November 2021)
- ✓ 30 months prior.....Next Steps Meeting #1 (February 2022)
- ✓ 24 months prior.....Schedule review & Collaboration between staff and administration (August 2022)
- ✓ 24 months prior.....Staff Assignment process developed between CTA, staff and administration (August 2022)
- ✓ 22 months prior.....Next Steps Meeting #3 (October 2022)

19 months prior.....Recommendations from Next Steps Committee presented to Board of Education (January 2023)

18 months prior.....Staff Assignments (February 2023)

18 (more) months to prepare for a successful transition!!!

****This includes search for building principal (late Fall of 2023)***

0 months.....August 2024 - First Day of School

FAQ

How can I (or others) stay connected to the work of the Next Steps Committee?

<http://www.ofsd.k12.mo.us/cms/One.aspx?portalId=20282425&pageId=70580717>

Looking Forward

- New High School Construction Continues.
 - Space will be tight until completion of the new High School in early 2024. This opens up space throughout the district beginning with the 2024-25 school year.
 - There will be future building needs across the district. Notably a 3rd Elementary School and a potential addition to the Early Learning Center.
- Additional Staffing needs are always dependent upon enrollment

THANK YOU.

COMMENTS?

QUESTIONS?