

Next Steps Committee

Meeting #1

February 9, 2022

Tonight's Agenda

- 6:00 Socialize - Cookies & Refreshments
- 6:15 Welcome and Introductions of the Committee
- Committee Members
 - Committee Expectations and Processes
 - Establish Common Understanding among the Committee
 - Student Enrollment Data
 - Review of Existing Building Capacity
 - Develop Committee Priorities/Commitments
 - Next Meeting

Committee Members

The Next Steps committee is comprised of 34 members; made up of 3 Board members, the Superintendent and the remaining 30 members will be 50% parents and 50% district staff.

School Board

- Steve Stopke, Member
- Brad Westerfeld, Treasurer
- Eric Williams, Member

Superintendent

- Dr. Wade Steinhoff

District Staff

- Dr. Keith Klostermann, Asst. Superintendent
- Dr. Melissa Daniel, Director of Student Services
- Duane Stuermann, Director of Operations

Orchard Farm Elementary

- Dr. Jerry Oetting, Principal
- Kristine Dunkmann, Counselor
- Katie Land, Teacher (5th)
- Autumn Olendorf, Teacher (1st)

Discovery Elementary

- Dr. Luke Dix, Principal
- Melissa Greer, Teacher (4th)
- Matt King, Librarian
- Donna Massman, Teacher (1st)

Orchard Middle School

- Dr. Michelle Geringer, Principal
- Jodi Boschert, Teacher (6th)
- Jacquelyn Bruno, Teacher (6th)
- Camille Frost, Teacher (Electives)

Parents

- Desiree Bagot
- Julie Benanti
- Michael Boyd
- Jenna Boyer
- Marisa Farrar
- Jan Herter
- Karon Lamar
- Jonathon Lee
- Myshell Lester
- Joanne Menke
- Melissa Pingel
- Jeremy Reidelberger
- Dan Rosenberg
- Chuck Rowles
- Andy Schomaker

AT YOUR TABLES....

Focus & Charge of Next Steps Committee

Focus:

Construction of the New Orchard Farm High School is underway. The Next Steps Committee will focus on K-8 District facility planning.

Charge of the Committee:

- Review enrollment trends and projections
- Develop recommendations to accommodate future increases in student enrollment
- Review status of current school configurations and make recommendations on most effective future use
- Develop recommendations regarding future facility needs
- Formal and final plan approval will be the responsibility of the Board of Education

Establishing Ground Rules

- We will start on time and end on time
- We will adhere to an agenda
- We will agree or disagree with ideas, not an individual
- All meetings will remain positive and productive
- If decisions are needed, they will be done by consensus

Committee Member Expectations

Time Commitment:

- 3-4 evening meetings, each up to 2 hours
- From February 2022 thru January 2023

Roles/Responsibilities:

- Make every effort to be present at each meeting.
- Arrive on time and have an open mind.
- Be supportive of the recommendations that the group makes.

What brings us here tonight...

- Consistent enrollment growth & current school buildings at capacity
- High School under construction - target completion January 2024
- Spaces open in existing school buildings when grade 9-12 move to new building
- Plan to be developed for Grades K-8

AREA DEVELOPMENT

ST. LOUIS POST-DISPATCH

New Town booming as St. Louis region grows at its edges

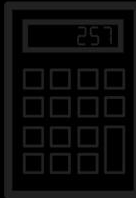


ORCHARD FARM
SCHOOL DISTRICT



60
YEARS

GLUE

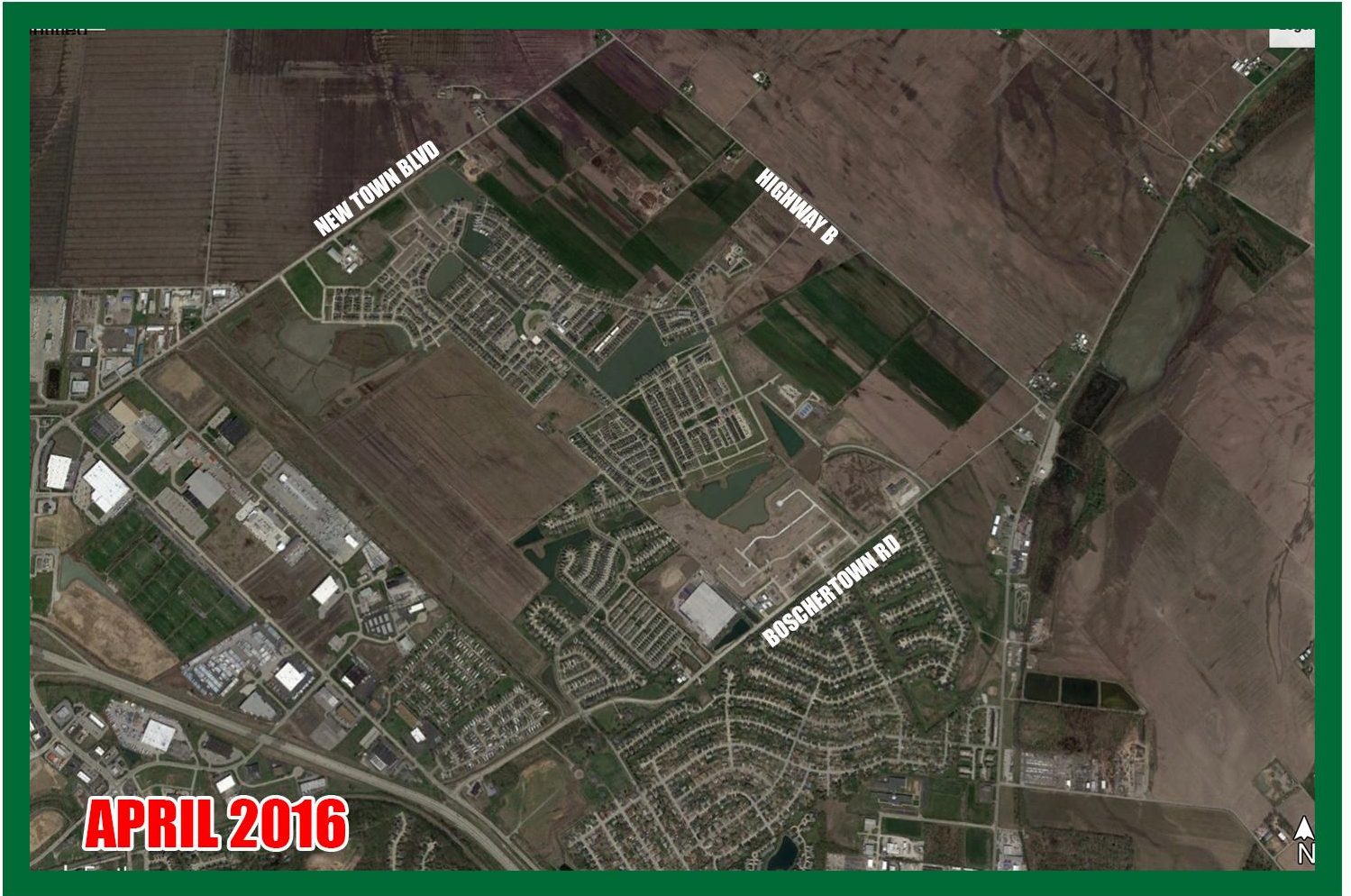
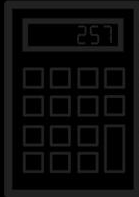


ORCHARD FARM
SCHOOL DISTRICT



60
YEARS

GLUE



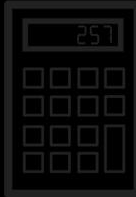
APRIL 2016

ORCHARD FARM
SCHOOL DISTRICT



60
YEARS

GLUE



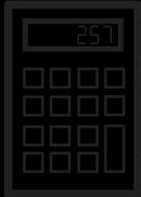
AUGUST 2017

ORCHARD FARM
SCHOOL DISTRICT



60
YEARS

GLUE



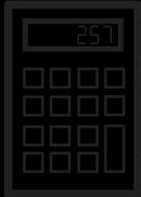
OCTOBER 2018

ORCHARD FARM
SCHOOL DISTRICT



60
YEARS

GLUE

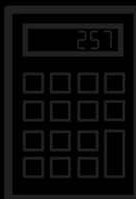


ORCHARD FARM
SCHOOL DISTRICT



60
YEARS

GLUE



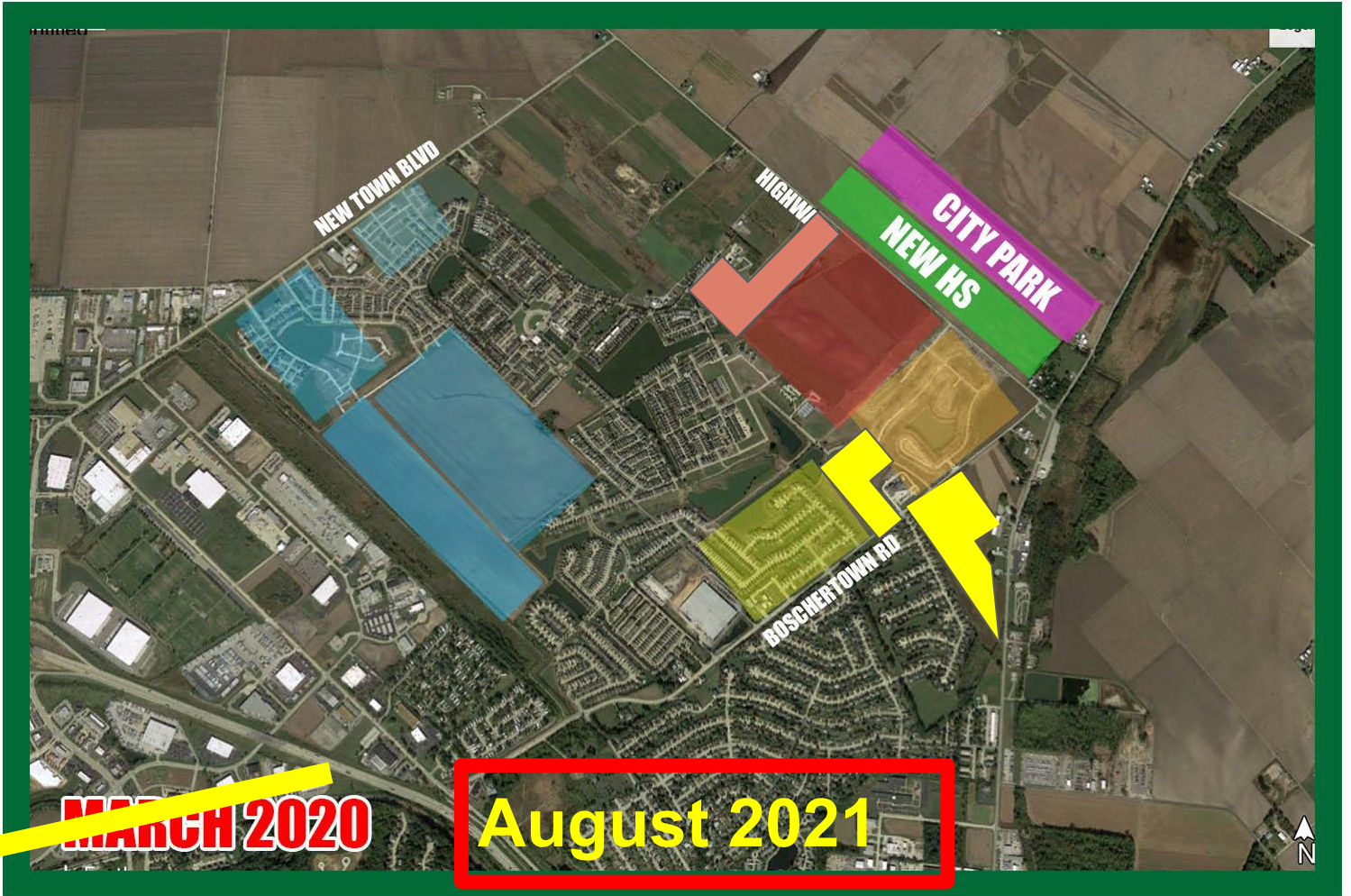
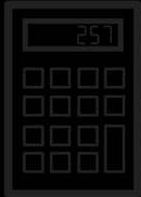
MARCH 2020

ORCHARD FARM
SCHOOL DISTRICT




60
YEARS

GLUE





CHARLESTOWNE LANDING



**Lake Views
Homes & Villas**
with groundskeeping included

**Walk to
New Town!**

NOW SELLING!

**RIVER BREEZE
ESTATES**

Hometown Collection
From the Low \$300's



314-276-1900



Consort-Homes.com

**New Homes
in St. Charles**



**Villages of
PROVENCE**
N. Duchesne

**Manors at
ELMHAVEN**
Elm Street

314-283-6510



FandFHomes.com

COMING SOON

**CHARLESTOWNE
MEADOWS**

**New Homes
from \$200's**

Visit sales office at
Charlestowne Landing

**STRAIGHT
AHEAD**



**MCBRIDE
HOMES**



COMING SOON

CHARLESTOWNE
MEADOWS

New Homes
from \$200's

www.McBrideHomes.com

MCBRIDE
HOMES

Missouri's Largest Homebuilder

(314) 336-0207



COMING THIS

NOW OPEN!

NOW OPEN!

THIS SUMMER!

RIVER BREEZE
ESTATES

Join our interest list!



Homes from the \$300s

314-276-1900

ConsortAtRiverBreeze.com

Join our interest list!



Homes from the \$300s

314-276-1900

ConsortAtRiverBreeze.com











McBride Homes



4d · 🌐

15 NEW HOMESITES coming to Charlestowne Landing! We will begin sales on Saturday, February 19th but you can visit our display today for more information!

Located off New Town Boulevard and Hwy B with pricing from the \$260's to \$400's, Charlestowne Landing is a beautiful neighborhood with stunning lakes located in the prestigious Orchard Farm School District.

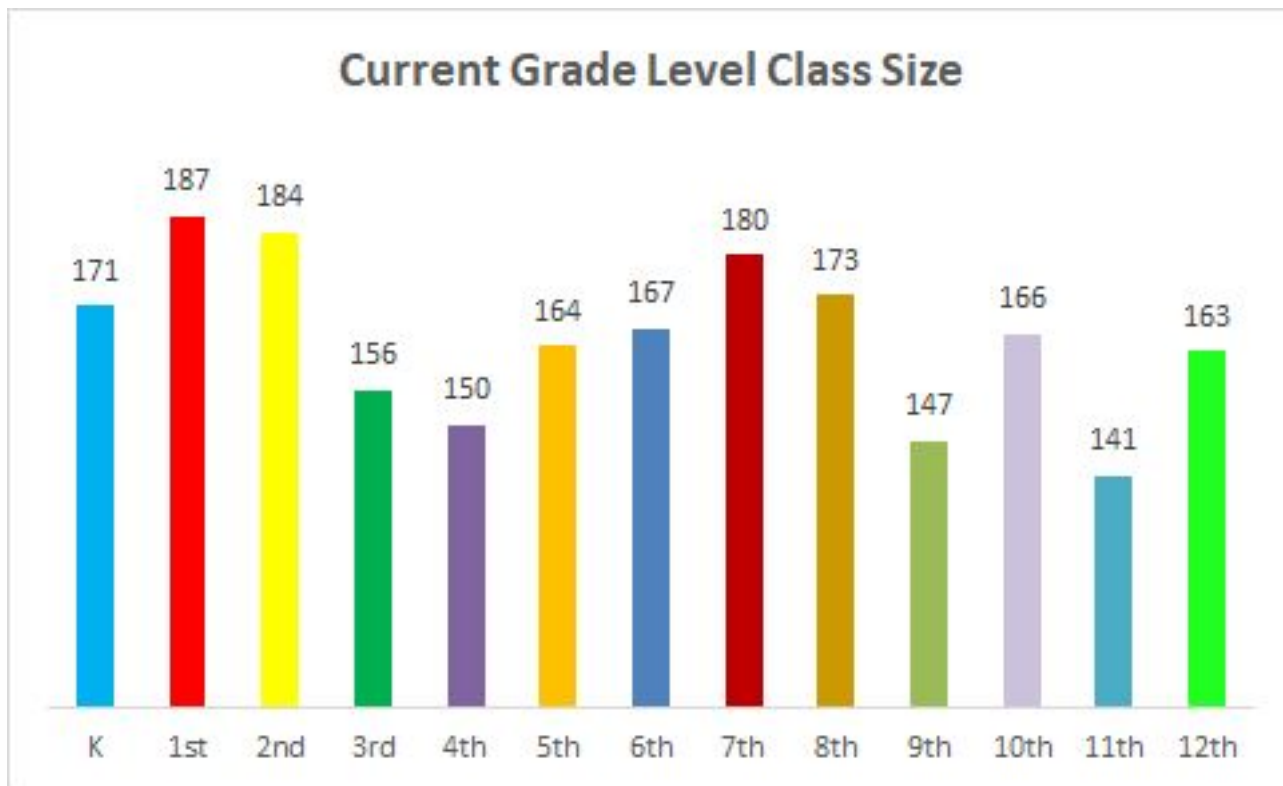
<https://mcbridehomes.com/new-homes/missouri/st-charles/stcharles---new-town-blvd/427/manors-at-charlestowne-landing.html>



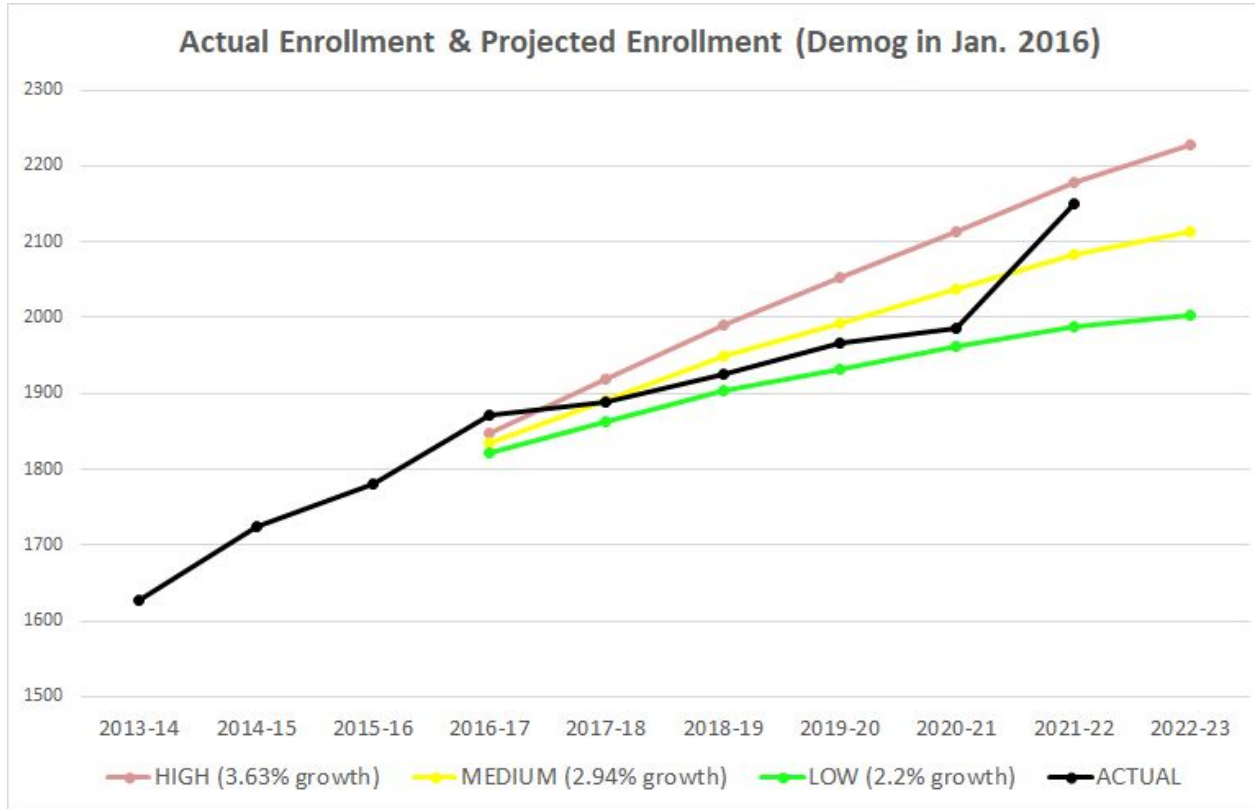
(K-12) Building Enrollment

	Enrollment	Prior Year +/-
DES	455	+23
OFE	557	+37
MS	520	+40
HS	617	+64
TOTAL	2,141	+164

(K-12) Current Enrollment by Grade Level



(K-12) Demographic Study



Recent District Construction Projects

Since 2004, student enrollment in the Orchard Farm School District has **increased in 15 of those 17 years**. That growth has been at an **average of 4% over the past 7 years**, including a **high of 8.3% growth** for this current school year. As student enrollment continued to grow year after year, available classroom spaces became harder to find. The District matched the increase in student enrollment with:

- Construction of a new Early Learning Center (2015)
- Additions to Discovery Elementary and the High School (2015)
- Additions to the Middle School (2019)
- Additions to the Early Learning Center (2019)
- Additional infrastructure upgrades were done along the way, including significant enhancements to security, the Water Treatment Facility on the Main Campus, HVAC replacements, restroom renovations, all-access playground upgrades, and more.

Building Capacity - Spaces

Continues to be more competition in schools for space today than ever before:

- Innovation Classrooms
- Gifted Education
- English Language Learners (ELL)
- Increased Counselor, Social Worker, and related support services
- Increased Special Education Services
 - OT/PT therapy rooms
 - High Behavior Needs (TEAMS)
 - Speech Language rooms

Building Capacity - Immediate Future (prior to New HS Opening)

Orchard Farm Elementary

- (1) open classroom. If additional classroom space is needed, support services areas may need to be relocated to open classroom spaces in 2022-23 and 2023-24

***Update: The open classroom is likely to be gone in 2022-23 due to enrollment growth**

Discovery Elementary

- If necessary, support services areas may need to be relocated to open classroom spaces in 2022-23 and 2023-24

Middle and High School

- Spaces will be utilized during “off” hours in 2022-23 and 2023-24

<https://youtu.be/yAXf6G1b-cU>



Building Capacity - After the High School Opens

Preview - Meeting # 2

Currently

Open Classrooms

Grades K-5	1
Grades 6-8	0
Grades 9-12	0
Total	1

After New HS Opens

Open Classrooms

Grades K-8	27 (plus support spaces)
Grades 9-12	*TBD
Total	27+

Priorities/Commitments to Guide our Future Work

Key Dates

November 2021	Next Steps Committee approved by the Board of Education
February 2022	The Committee will meet to review current enrollment trends and projections, review current and projected capacity at each school building, and set goals for our future planning.
April 2022	The Committee will reconvene to begin future planning discussions.
October 2022	The Committee will review new school year enrollment, continue future planning discussions, and begin developing Committee recommendation.
January 2023	The Next Steps Committee will complete their recommendation. This recommendation will be shared with the Board of Education at the January Board of Education Meeting for consideration.

Next Meeting

April 6, 2022

6:00 PM

(same location)

FAQ

How can I (or others) stay connected to the work of the Next Steps Committee?

<http://www.ofsd.k12.mo.us/cms/One.aspx?portalId=20282425&pageId=70580717>

THANK YOU.

COMMENTS?

QUESTIONS?