



HOME OF THE EAGLES

ORCHARD FARM
SCHOOL DISTRICT



60
YEARS

3489 Boschertown Rd.
St. Charles, MO 63301

ofsd.k12.mo.us

(636) 925-5400

The logo for Proposition G. It features a row of seven green house silhouettes above the word 'PROPOSITION' in large, bold, green capital letters. To the right of 'PROPOSITION' is a large green letter 'G' with a green leaf sprouting from its top curve. Below 'PROPOSITION' is the tagline 'GROWING COMMUNITY. GROWING DISTRICT.' in a smaller, green, sans-serif font.

PROPOSITION G

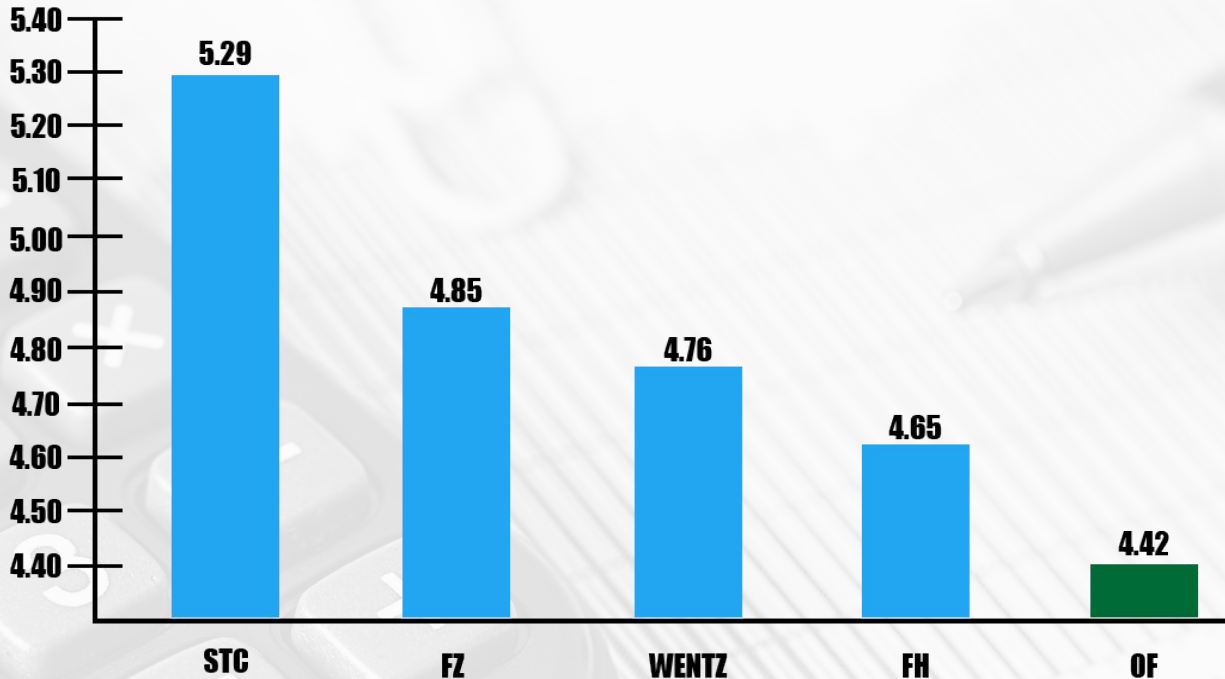
GROWING COMMUNITY. GROWING DISTRICT.

BALLOT LANGUAGE

Shall the Board of Education of Orchard Farm R-V School District be authorized to increase the operating tax levy of the District by \$0.55 per one hundred dollars of assessed valuation for the purpose of funding the costs of capital projects including construction of a new high school?

If this question is approved, the adjusted operating levy of the District is estimated to be \$4.2467 per one hundred dollars of assessed valuation.

HOW DOES OFSD COMPARE?



Seeking .49¢
Increase (June 2020)



Seeking .55¢
Increase (June 2020)





**LAST TAX INCREASE WAS
16 YEARS AGO IN 2004.**



+

**.55¢
Increase**

=

**Increase of
\$18/month**

**Avg. home in OFSD
\$208,000**



WHY A .55 INCREASE..WHY 55 MILLION DOLLARS?

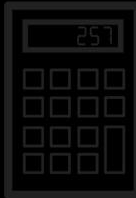
1 Cent = 1 Million Dollars

Current Market

District Architect

Community Engagement

Replication of Current Facilities



WHY NOT A BOND ISSUE?

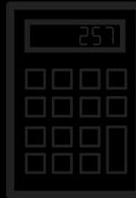
The **Missouri School District Bond Limit Amendment**, also known as **Amendment 4**, was on the April 7, 1998 ballot in Missouri as a legislatively referred constitutional amendment, where it was approved. The measure set the maximum bonding capacity for school districts at an amount not to exceed **15%** of the value of taxable tangible property in the district.



AREA DEVELOPMENT

ST. LOUIS POST-DISPATCH

New Town booming as St. Louis region grows at its edges

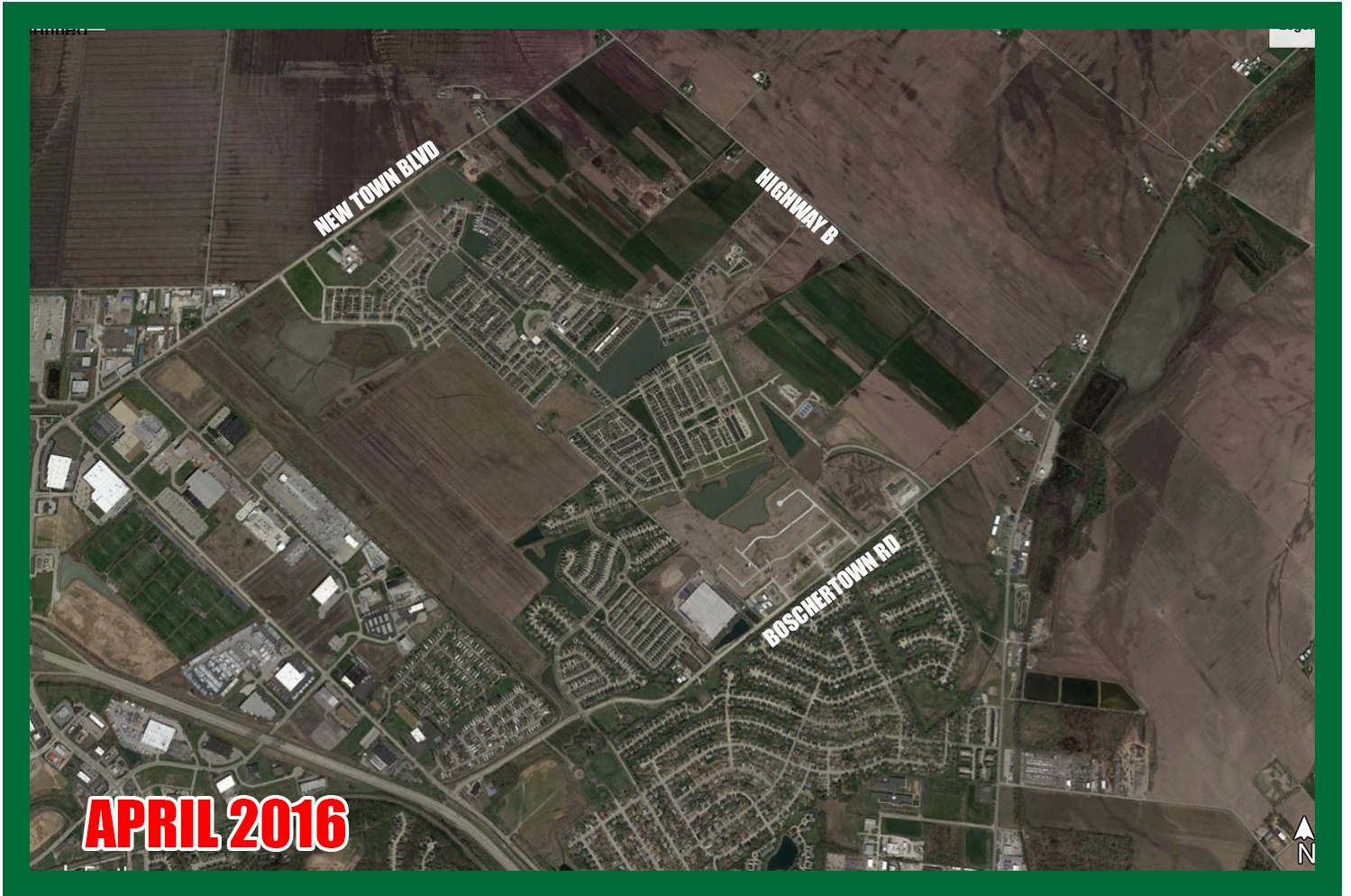
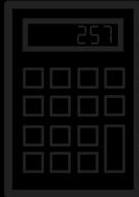


ORCHARD FARM
SCHOOL DISTRICT



60
YEARS

GLUE

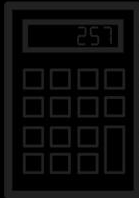


ORCHARD FARM
SCHOOL DISTRICT



60
YEARS

GLUE



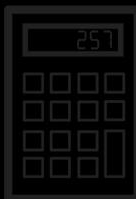
AUGUST 2017

ORCHARD FARM
SCHOOL DISTRICT



60
YEARS

GLUE



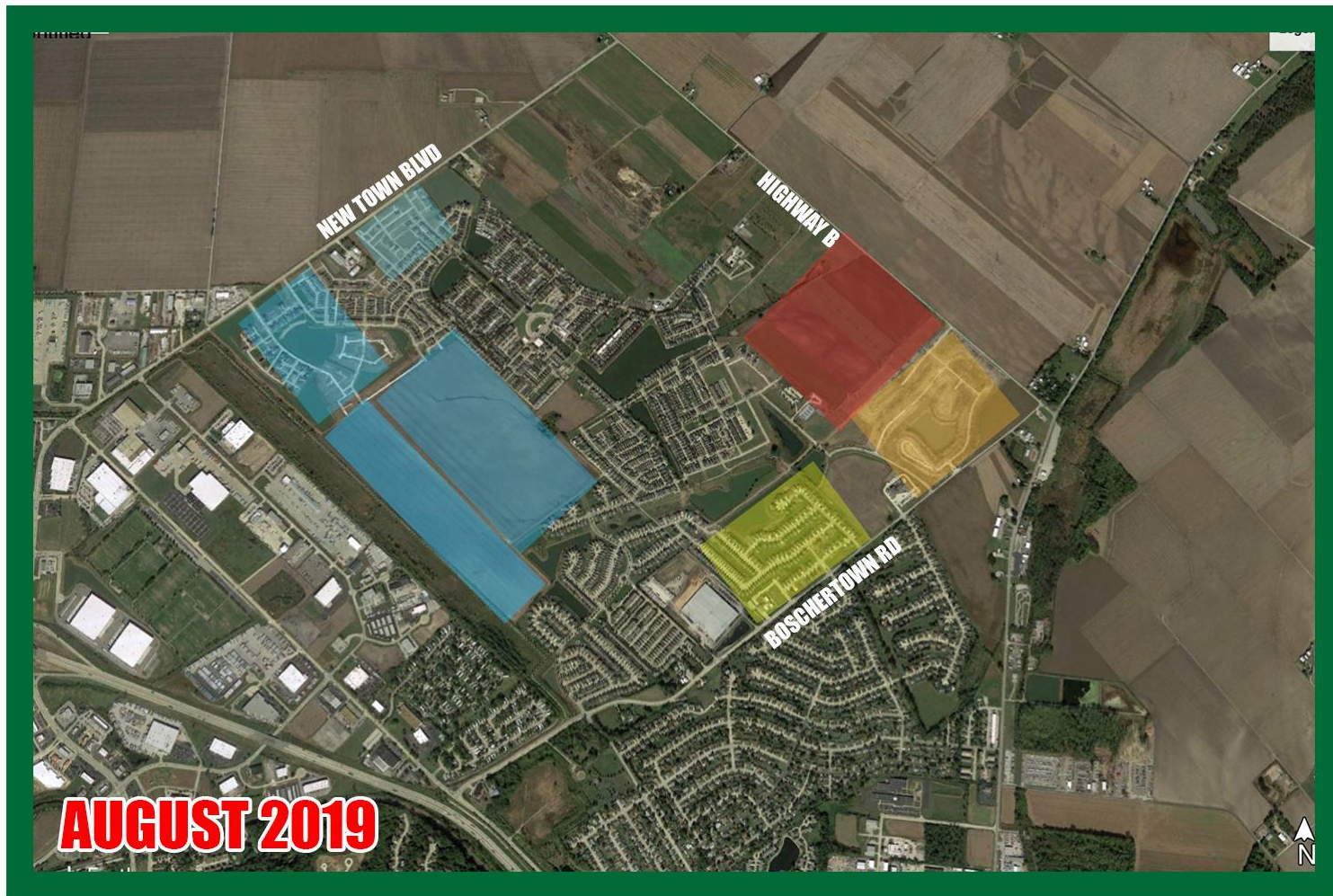
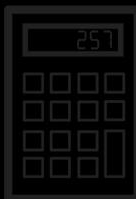
OCTOBER 2018

ORCHARD FARM
SCHOOL DISTRICT



60
YEARS

GLUE



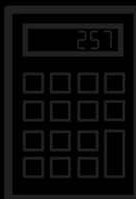
AUGUST 2019

ORCHARD FARM
SCHOOL DISTRICT



60
YEARS

GLUE



MARCH 2020

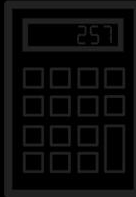
More Homes & More Students....Realities of School Funding

ORCHARD FARM
SCHOOL DISTRICT



60
YEARS

GLUE



Avg. OFSD
Home Value
\$208,000

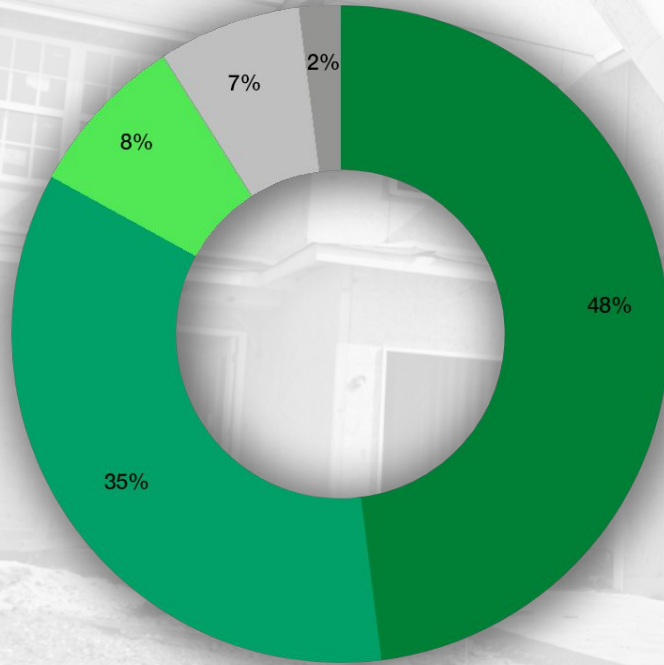


Money to District
\$1,749/yr (current tax rate 4.4267)



\$1,966/yr (4.4267 + 0.55 increase)

Local Revenue Sources



- 48%-Taxes from Residential
- 35% Taxes from Commercial
- 8%-School District Trust Fund (Prop C)
- 7%-Interest Earnings, Food Service, Before & After Childcare, Preschool Tuition, Rentals and Misc. Revenue
- 2%-Taxes From Agriculture



More Homes & More Students....Realities of School Funding


**Residential Real Estate Example*

**Avg. Cost per Student
\$13,552/yr**



 with 0 students + \$1,749

 with 1 student - \$8,176

 with 2 students - \$18,106

 with 3 students - \$28,026

 with 4 students - \$37,951

Cost per student, less local, state, federal aid

*2019 ASBR; Feb. 2020 BOE Meeting



OFSD ENROLLMENT GROWTH

ENROLLMENT GROWTH

- Grades K-5 Enrollment currently exceeds where the demographer projected it to be in 2023-24.

- Grades 6-8 Enrollment is the lowest it will be for at least the next 4 years (without any additional growth).

- Grades 9-12 Enrollment projects to increase every year moving forward. Currently the three smallest grade levels in the district are all at the high school.

2K STUDENTS



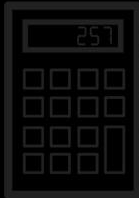
OFSD CLASSROOM SPACE

CLASSROOM SPACE

- We have only 1 classroom space between the two Elementary buildings.

- There are no classrooms spaces available at the Middle School.

- There are no classroom spaces available at the High School.



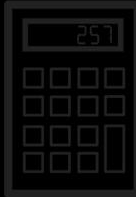
**1 New School =
Major Impact!**

**NEW HIGH SCHOOL ADDS
CLASSROOM SPACE FOR
GRADES K-12**

**New High School accommodates
current and future enrollment
in grades 9-12.**

AS WELL AS,

**Provides an additional 28
classrooms to be used for
grades K-8 expansion.**



WHY NEW HIGH SCHOOL HERE?



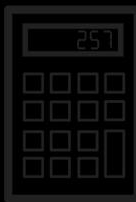
The District purchased property on Hwy B after exhausting all efforts to acquire adjoining property to expand the main campus.

ORCHARD FARM
SCHOOL DISTRICT



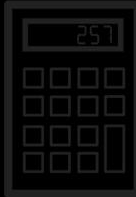
60
YEARS

GLUE



BENEFITS OF HWY B LOCATION

- **Cost to bring city utilities to site significantly less than any other available property.**
- **100 acres allows for the new high school AND other growth/needs in the future.**
- **Next to city owned site of a future park.**



YOUR TAX DOLLARS AT WORK (Prop F - 2014)



**Discovery Elementary
(8 classroom addition)**



**High School
Science Labs**



Early Learning Center



**Middle School
(5 classroom addition)**



Fitness Center

YOUR TAX DOLLARS AT WORK (Capital Projects 2013-Present)



Bus Fleet



Roof Repairs



**Purchased Land For
Early Learning Center**



Water Treatment Facility

**7.5M from non-bond issue fund
for construction related activity.**



Lagoon Project

YOUR TAX DOLLARS AT WORK (Prop R-2018)



**Early Learning Center
(7 classroom additions)**



Playgrounds



OFMS Cafeteria



HVAC



SafeDefend



OFMS Administration

Questions about Proposition G?

Visit our website at www.ofsd.k12.mo.us
and click on the Districts tab, then select Proposition G.

Email ofsdcomm@gmail.com with any questions.



GLUE

