


Make sure you are using Internet Explorer and you will need to make sure you have Compatibility Mode turned on. Once you login to the parent portal, turn on "Compatibility View"

METHOD ONE

Through the Address Bar

NOTE: If Internet Explorer recognizes a webpage that is not compatible, you will see the Compatibility View icon button  on the Address bar.

1. To Turn On Compatibly View for the Webpage

A) Click on the unhighlighted Compatibility View icon button. (See screenshot below)

NOTE: The webpage will now reload with Compatibility View turned on for it.



2. To Turn Off Compatibly View for the Webpage

A) Click on the highlighted (blue) Compatibility View icon button. (See screenshot below)

NOTE: The webpage will now reload with Compatibility View turned off for it.



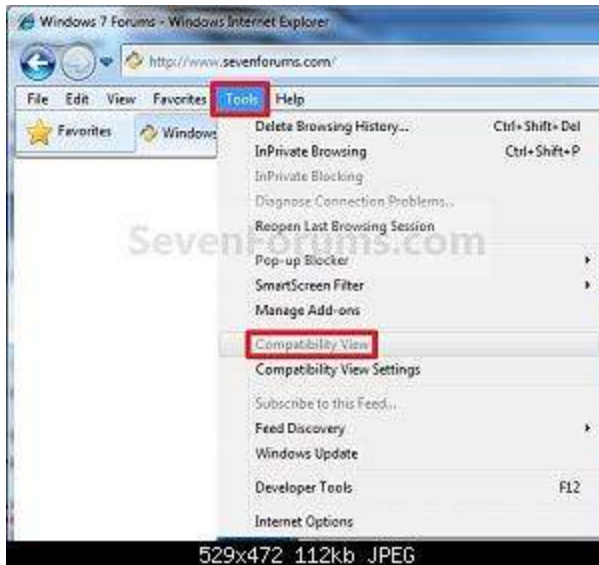
METHOD TWO

Through the Tools Menu

NOTE: This will let you turn on or off Compatibility View for the current webpage.

1. Click on the **Tools Menu Bar** (ALT+T) item. (See screenshot below)

NOTE: If **Compatibly View** is grayed out, then the webpage has no compatibility issues and does not need to have Compatibility View turned on for it. You can still use **METHOD THREE** below to turn on Compatibility View for it though if you like.

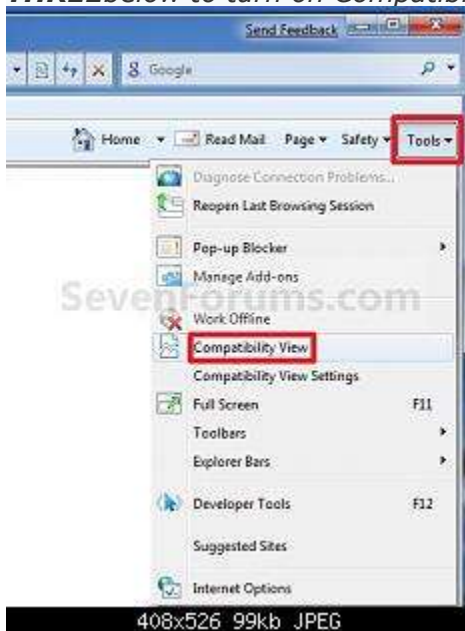


A) Go to step 3.

OR

2. Click on the **Tools Command Bar** button. (See screenshot below)

NOTE: If **Compatibiliy View** is grayed out, then the webpage has no compatibility issues and does not need to have Compatibility View turned on for it. You can still use **METHOD THREE** below to turn on Compatibility View for it though if you like.



3. To Turn On Compatibiliy View for the Webpage

A) Click on **Compatibiliy View** to check it. (See screenshots above)

NOTE: The webpage will now reload with Compatibility View turned on for it.

4. To Turn Off Compatibiliy View for the Webpage

A) Click on **Compatibiliy View** to uncheck it. (See screenshots above)

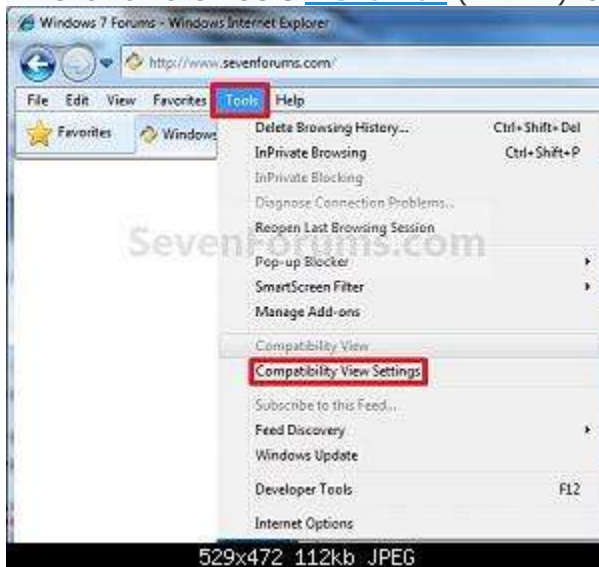
NOTE: The webpage will now reload with Compatibility View turned off for it.

METHOD THREE

Through Compatibly View Settings

NOTE: This will let you turn on or off Compatibility View for a webpage by adding or removing the webpage address from the Compatibility View list.

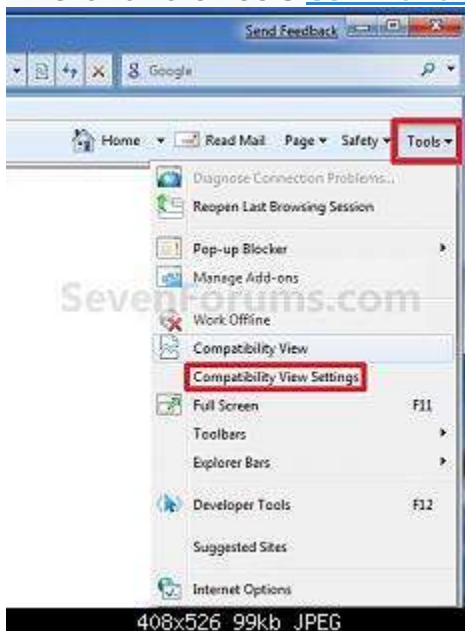
1. Click on the **Tools Menu Bar** (ALT+T) item. (See screenshot below)



A) Go to step 3.

OR

2. Click on the **Tools Command Bar** button. (See screenshot below)



3. Click on **Compatibility View Settings**. (See screenshots above)

4. To Add a Webpage to the Compatibility View List

A) Type in the webpage address that you want to turn on Compatibility View for, and click on the **Add** button. (See screenshot below)

NOTE: The current webpage address will automatically be filled in for you. Just clear it if you want to add a different address instead.



B) Go to step 6.

5. To Remove a Webpage from the Compatibility View List

A) Select a listed webpage address that you want to turn off Compatibility View for, and click on the **Remove** button. (See screenshot below)



6. Click on the **Close** button. (See screenshots above)